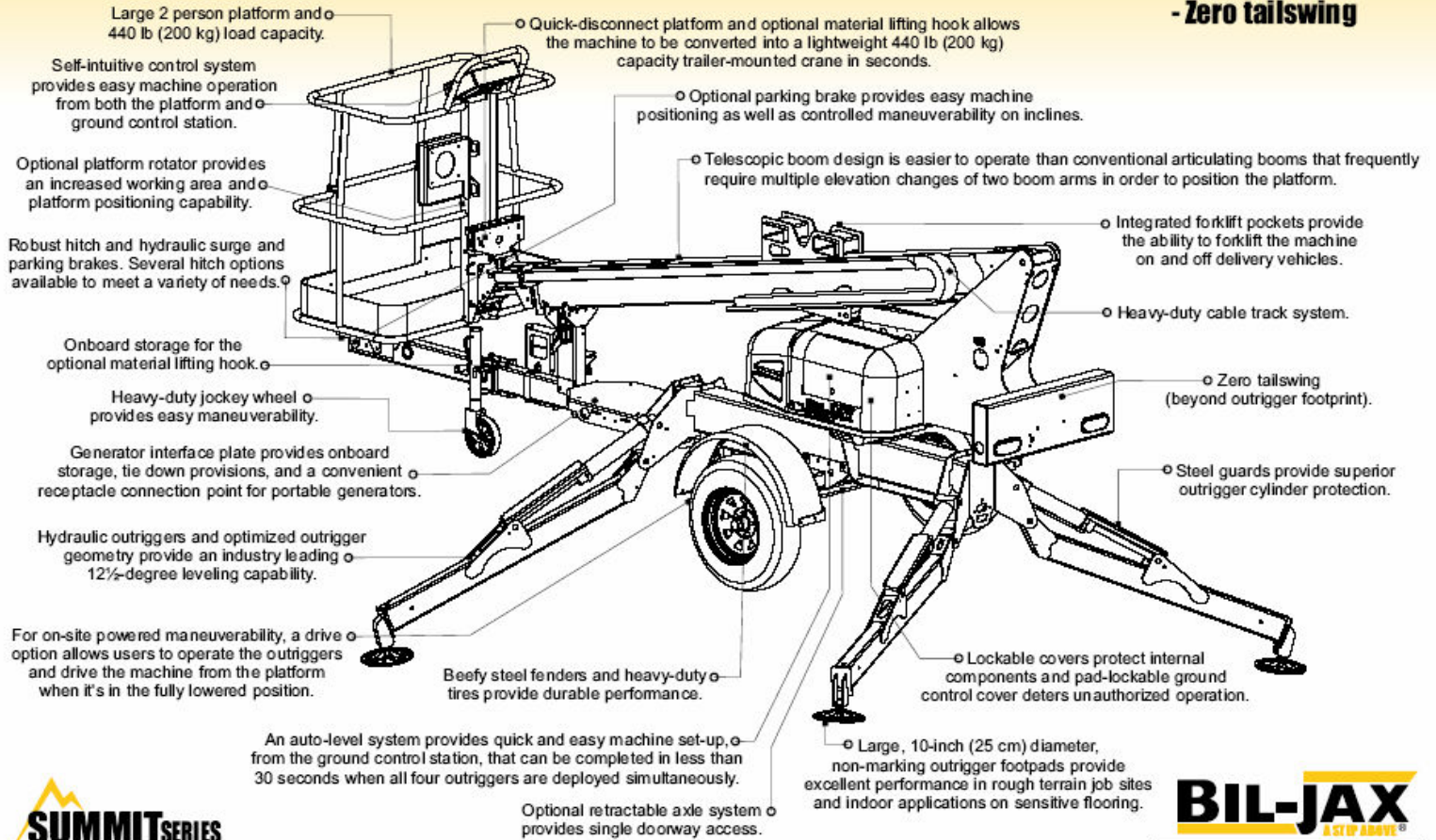


# 2622T

- 32½ ft (10.1 m) working height
- 22 ft (6.7 m) maximum outreach
- Automatic leveling
- Hydraulic outriggers
- Zero tailswing



## BIL-JAX 2622T

### Automatic Leveling System

A self-leveling system provides quick and easy set-up in less than 30 seconds.

### Hydraulic Outriggers

Optimized outrigger geometry provides industry leading leveling capability.

### Working Envelope and Outreach

The telescopic boom design offers exceptional outreach and working envelope and is easier to operate compared to conventional articulating booms.

### Easy to Use

Both the platform and ground control station feature an easy-to-understand display panel with control buttons that are logically positioned around a single machine image for easy identification of button functions.

### Versatile

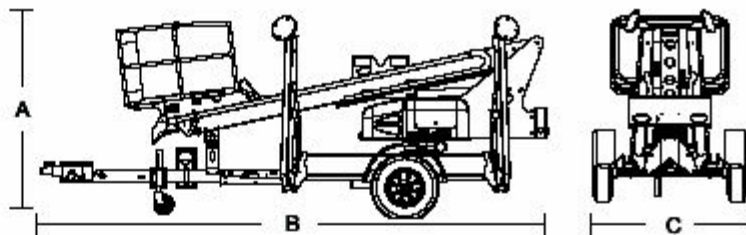
A quick-disconnect platform and optional material lifting system provides the ability to convert the machine into a light duty crane.

### Easy to Transport

The boom is easily towed with a Class 2 hitch. Compact stowed dimensions provide a high level of maneuverability. Convenient integrated forklift pockets are also provided.

### Standard Features

- 32 ft 6 in (10.1 m) maximum working height
- 22 ft (6.7 m) working outreach
- 440 lb (200 kg) lift capacity
- Outrigger interlocks and tilt alarm/sensor
- Automatic leveling system
- Hydraulic outriggers
- 700-degree non-continuous turntable rotation
- Multiple control function speeds
- Self-leveling platform
- Hydraulic surge and parking brakes
- Hour meter and battery condition indicator(s)
- 10-inch diameter non-marking footpads
- Heavy-duty 2-inch ball hitch



### Specifications for 2622T

	US	Metric
<b>Lift Height</b>		
Working height <sup>1</sup>	32 ft 6 in	10.1 m
Platform height <sup>2</sup>	26 ft 6 in	8.1 m
<b>Outreach</b>		
Maximum (from centerline)	22 ft	6.7 m
Maximum (from edge of footpad)	17 ft 1 1/2 in	5.2 m
<b>Turntable rotation</b>	700° non-continuous	
<b>Load capacity</b>	440 lbs	200 kg
<b>Leveling capability</b>	12 1/2°	
<b>Stowed dimensions</b>		
(A) Height	77 1/2 in	197 cm
(B) Length	16 ft 5 1/2 in	5 m
(C) Width	5 ft 5 1/2 in	166 cm
<b>Platform dimensions</b>		
Height	43 in	109 cm
Length	30 in	76 cm
Width	48 in	122 cm
Rotation / type (optional)	120° / manual	
<b>Outrigger footprint</b>		
Length	11 ft 3/4 in	3.4 m
Width	9 ft 10 1/2 in	3 m
Footpad diameter	10 in	25 cm
Outrigger type	Hydraulic w/Auto Leveling	
<b>Tow speed rating</b>	65 mph	105 km/h
<b>Tongue weight</b>	120 lbs	54 kg
<b>Overrun brakes</b>	Standard	
<b>Parking brake</b>	Standard	
<b>Tire size</b>	ST 205/75 R14C	
<b>Standard control system</b>	24V DC	
<b>Batteries</b>	4 x 6V 245 amp-hr	
<b>Charger</b>	25 amp	
<b>Total weight</b> <sup>3</sup>	2,710 lbs	1,229 kg

<sup>1</sup> The metric equivalent of working height adds 2 m to the maximum platform height. U.S. adds 6 ft to the maximum platform height.

<sup>2</sup> Maximum platform height when outriggers are fully extended on a level surface.

<sup>3</sup> Weight will vary depending on options and/or market destination.

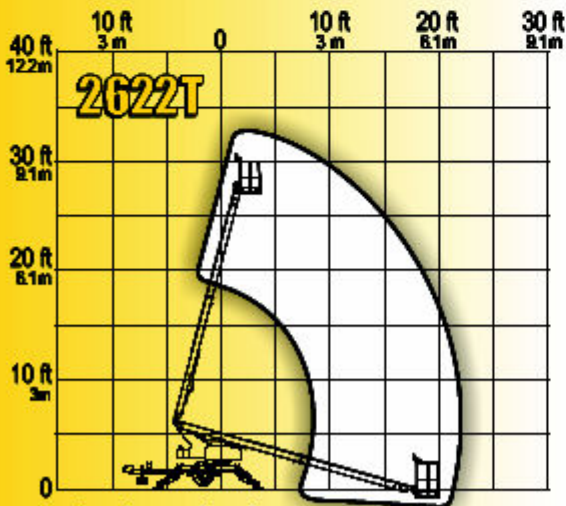
### Options:

- Retractable axle
- Material lifting hook or forks
- DC/Gas hybrid power
- Drive and set option
- Platform rotator
- Air line to platform
- Water line to platform
- Spare tire & wheel
- Tool tray
- Adjustable height combination hitch
- Mega battery package
- Electric brakes
- 110V GFI outlet in platform

**BIL-JAX** TRAILER-MOUNTED  
ASTIP ABOVE® **BOOMS**

Brought to you by: Robert's Diesel Works Inc.

407-246-1597 or 800-341-1370



### RANGE OF MOTION

BIL-JAX, Inc. provides coverage on all products for one (1) full year, and covers all specified major structural components for five (5) full years. Due to continuous product improvements, we reserve the right to make specification and/or equipment changes without prior notification or obligation. Photographs and drawings contained herein are for illustrative purposes only. Refer to the appropriate Operator's Manual for instructions on the proper use of this equipment. Failure to follow the appropriate Operator's Manual instruction or to otherwise act irresponsibly, may result in serious injury or death. This machine meets or exceeds applicable OSHA Regulations, and complies with all ANSI standards as originally manufactured for intended applications. Mark at specific machine configurations meet or exceed applicable CSA standards.